

Obstetric and Gynaecological Ultrasound in Mulgrave (formerly Diagnostic Women's Ultrasound), has provided specialist pregnancy and gynaecological ultrasound services to Melbourne's South East and the Dandenong region since 1989.

Dr Simon Meagher is an obstetrician/gynaecologist who has specialised in ultrasound and prenatal diagnosis. He is the Director of Monash Ultrasound for Women, consultant staff specialist at the Mercy Hospital for Women and lecturer at both Melbourne and Monash Universities. He is well known for his clinical and procedural skills and academic achievements, having over 40 publications in local and international journals.

O & G Ultrasound provides a complete range of pregnancy and gynaecological ultrasounds and related procedures including prenatal genetic testing for Down Syndrome. Dr Meagher (obstetrician/gynaecologist/ultrasonologist), Associates and sonographers specialised in obstetric ultrasound, work with state of the art, high resolution ultrasound machines. Together with an experienced team of nurses and support staff, our aim is to provide you with the highest quality ultrasound service available.



Transvaginal Ultrasound

Dr Simon Meagher

Obstetrician Gynaecologist Ultrasonologist
BSc MB BCH BAO MRCOG FRCPI FRACOG DDU COGU
& ASSOCIATES

441 Police Road, Mulgrave Victoria 3170

Email: simon.meagher@med.monash.edu.au <http://www.ultrasound.com.au>

Tel: (03) 9790 1766 Fax: (03) 9701 0011

HOW IS THE EXAMINATION PERFORMED?

A special transducer or probe which is slightly thicker than a tampon is used. It is covered with a disposable glove and warm lubricating gel, then gently placed into the vagina under ultrasound control. The probe sits in the vagina throughout the examination which usually takes 10-15 minutes. You will be completely covered with a drape during the examination. Most patients find the examination less uncomfortable when compared to a PAP smear test. The ultrasound images of your pelvis will be displayed on a television monitor above the examination couch. If you wish these will be pointed out and explained to you as the examination progresses. Should you *not* wish to see your examination please inform the staff at reception or the technician prior to the scan.

TRANSVAGINAL OR TRANSABDOMINAL ULTRASOUND : DO I HAVE A CHOICE?

It is always your choice as to which method of examination you wish to have. With transvaginal ultrasound the probe is positioned close to the uterus, fallopian tubes, ovaries and other pelvic structures and thus a far superior quality ultrasound image is obtained. In certain circumstances a transvaginal ultrasound examination is not possible or not advisable; for example, if you have not had sexual intercourse before and do not use tampons during your periods or there is scarring and tenderness in the vagina then a transabdominal ultrasound is the preferred approach. *If there are any concerns or enquiries regarding the examination you may contact us prior to the examination or speak to the technician or doctor prior to the scan.* If you prefer a female technician to perform the scan then this can also be arranged.

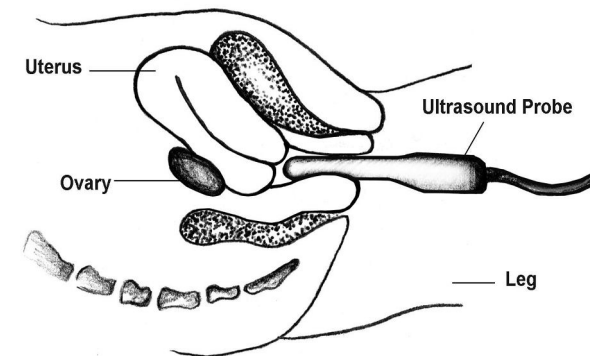
WHAT INFORMATION MAY BE OBTAINED FROM TRANSVAGINAL ULTRASOUND?

A pelvic ultrasound may detect a wide variety of diseases of the female genital tract, some of which require treatment. The examination assesses the structure of the vagina, cervix, uterus, fallopian tubes, ovaries and other pelvic structures. During the scan the technician may need to gently press on your abdomen to move bowel out of the way and bring the ovaries and other pelvic structures into view. This also enables assessment of abnormal tenderness in the pelvis which can help in identifying the source of the pain.

WHAT PREPARATION IS NEEDED BEFORE THE ULTRASOUND EXAMINATION?

The transvaginal examination is best performed with the bladder empty. The receptionist will ask you to empty your bladder just prior to your scan. It is important that you remove any tampons before the examination. If you are at the beginning or in the middle of your period, this is not a problem, in fact in many instances this is an advantage when assessing a variety of gynaecological problems. A disposable tissue sheet ("bluey") is placed beneath you on top of the examination couch. After the examination the probe will be gently removed, the vinyl protective covering disposed of and the probe soaked in a disinfectant solution. You will be given some tissues to remove the excess gel and you may then get changed in your own privacy. Similar to a smear test there may be some spotting after the scan. If you prefer to have an abdominal ultrasound rather than an internal scan, then a full bladder is necessary. To this effect you should drink 2-3 glasses of water before your appointment.

DIAGRAMMATIC REPRESENTATION OF A VAGINAL SCAN



Prepared by Dr Simon Meagher
Obstetrician/Gynaecologist/Ultrasonologist
MB BCH BAO (HONS), BSc., FRCPI., FRACOG., MRCOG., DDU., COGU